

Crime Briefing: Scrutiny

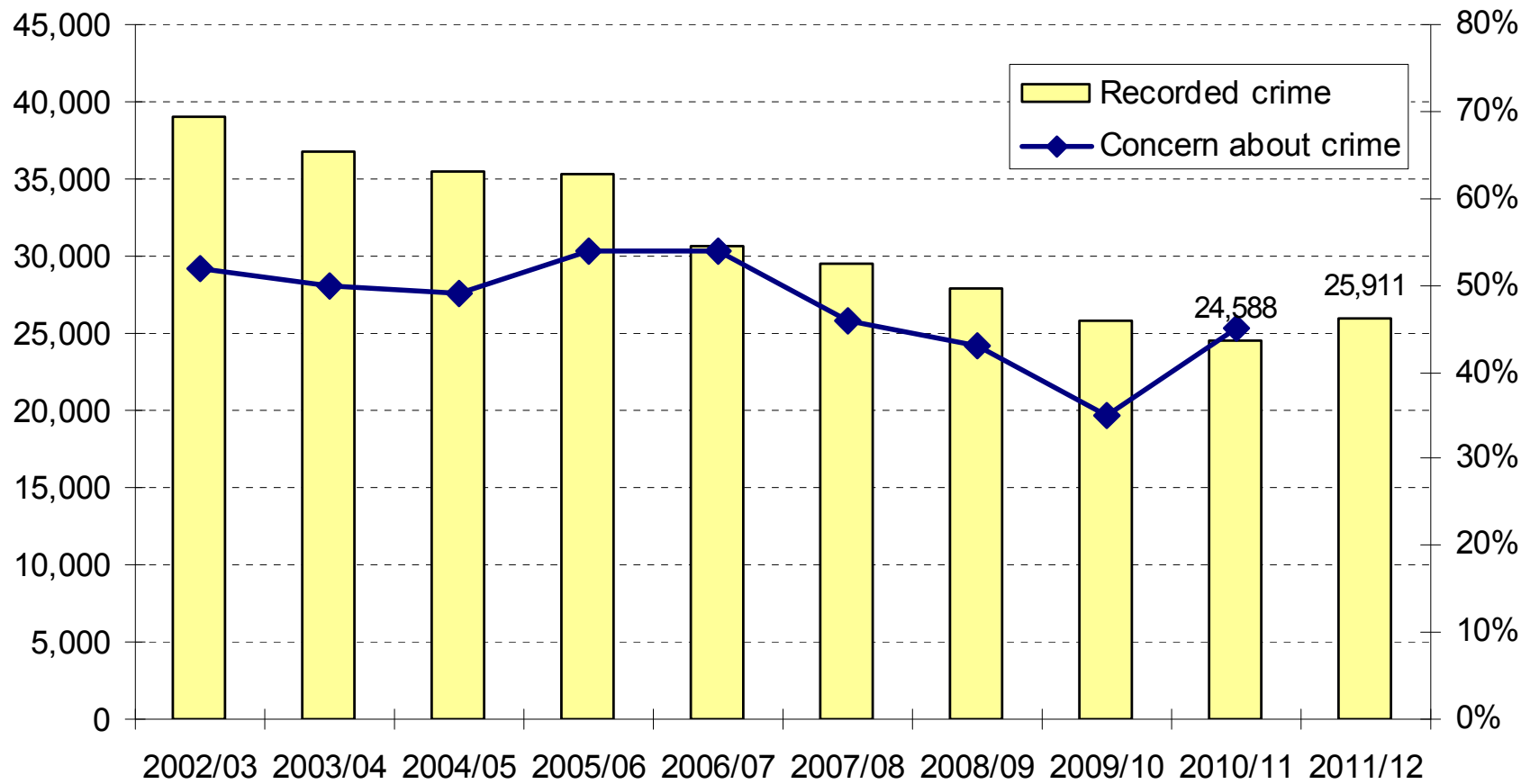
8th January 2013

Peter de Bourg

Claire Kowalska

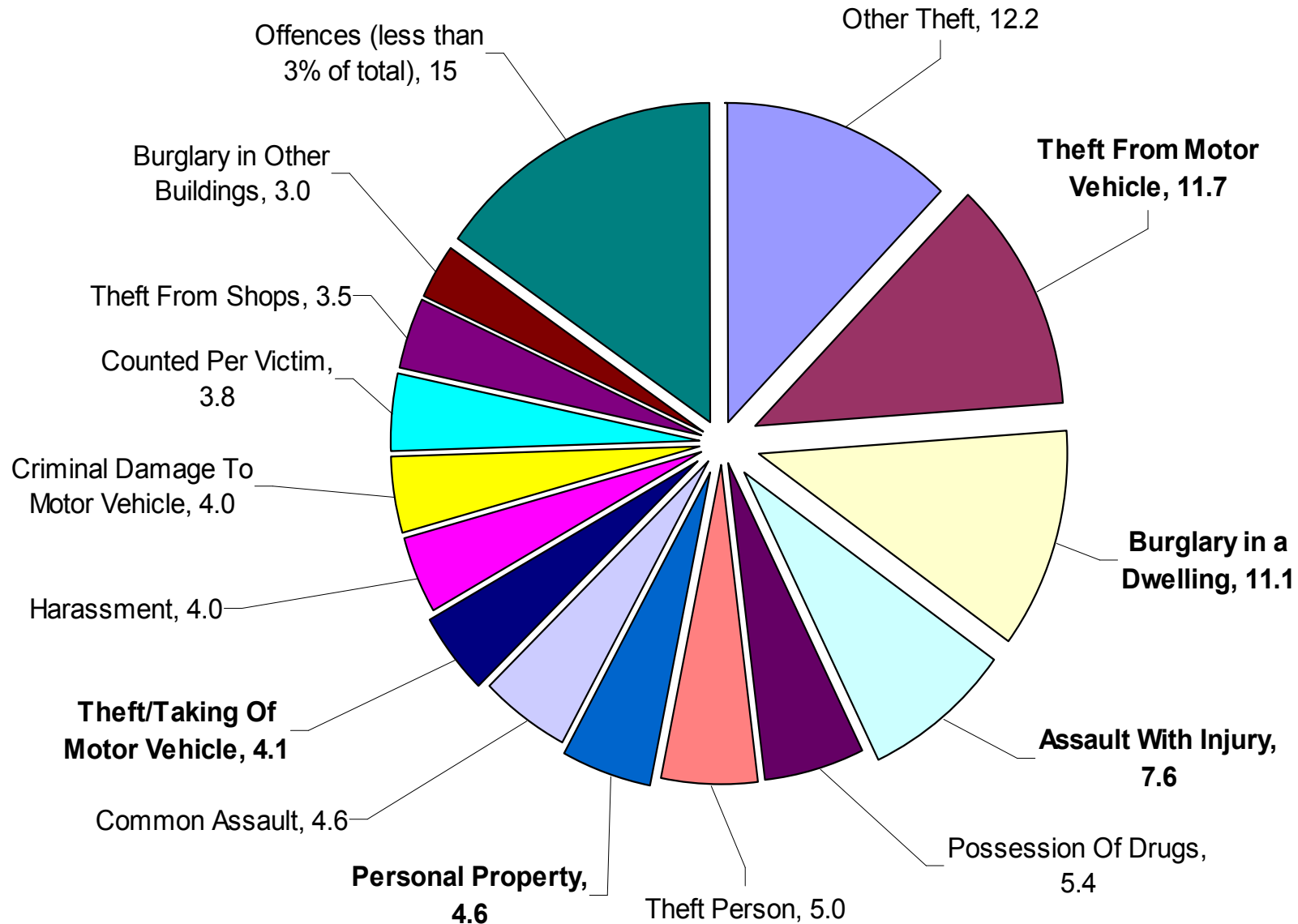
Long term trends

All crime and concern about crime in Haringey



Key crime profiles in Haringey

Crime in Haringey: offences accounting for 3% or more



Changes in police recording

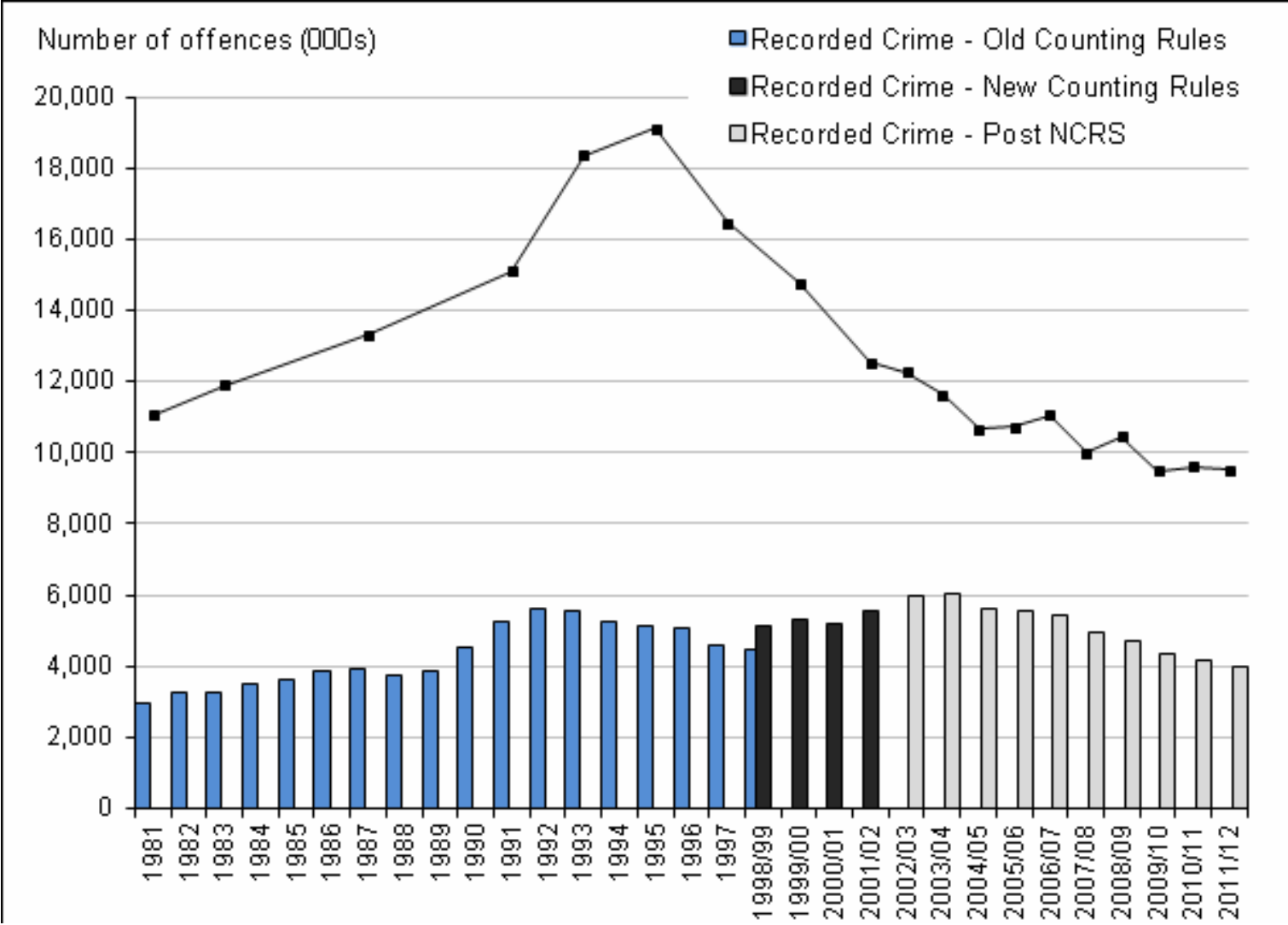
New Counting Rules, April 1998

- Changes concerned recording of multiple victims to one crime per victim
- Added a number of new offences
- Effect increased the number of crimes counted
- Offences post 1998/99 are not directly comparable with previous years
- Greatest impact within the drugs, violence against the person, fraud and forgery, other offences & criminal damage

National Crime Recording Standard (NCRS) 1 April 2002

- Promote greater consistency between Police Forces in the recording of crime
- Take a more victim oriented approach to crime recording
- Move towards a system based on the victim's perception of experiencing crime, rather than one based on evidence procured by the police
- Greatest impact on Violence Against the Person – estimated 23% increase nationally compared to 10% increase for all crime

Recorded crime v British Crime Survey



Haringey Performance – 12th December 2012

Crime Type	Target	FYTD 12/13	FYTD 11/12	% Change
Violence with Injury	-5%	1,639	1,644	-0.3%
Violence with Injury (DV)		521	410	+27.1%
Personal Robbery (victims)	-11%	748	1,042	-28.2%
Residential Burglary	-6%	1,728	1,776	-2.7%
TOMV		1032	1,678	-38.5%
TFMV		1,891	2,081	-9.1%
TO/TFMV	-8%	2,526	3,113	-18.9%

Haringey Performance – 12th December 2012

The current performance against MPS targets is good with a reduction year on year on all Serious Acquisitive Crime offences and a reduction in Violence with Injury

Violence with Injury - target -5%

- First period of reduction since April
- Main hotspot remains Noel Park ward
- Haringey ranked 21st in the MPS.

Domestic Violence

- Linked in part to changes of harassment classifications at the beginning of the year
- Despite this, volume of offences comparatively high with other Boroughs
- Sanction detection and arrest rates need to improve

Personal Robbery - target -11%

- Sustained period of reduction, no more than one or two robberies a day on average
- Haringey is ranked 6th best in the MPS

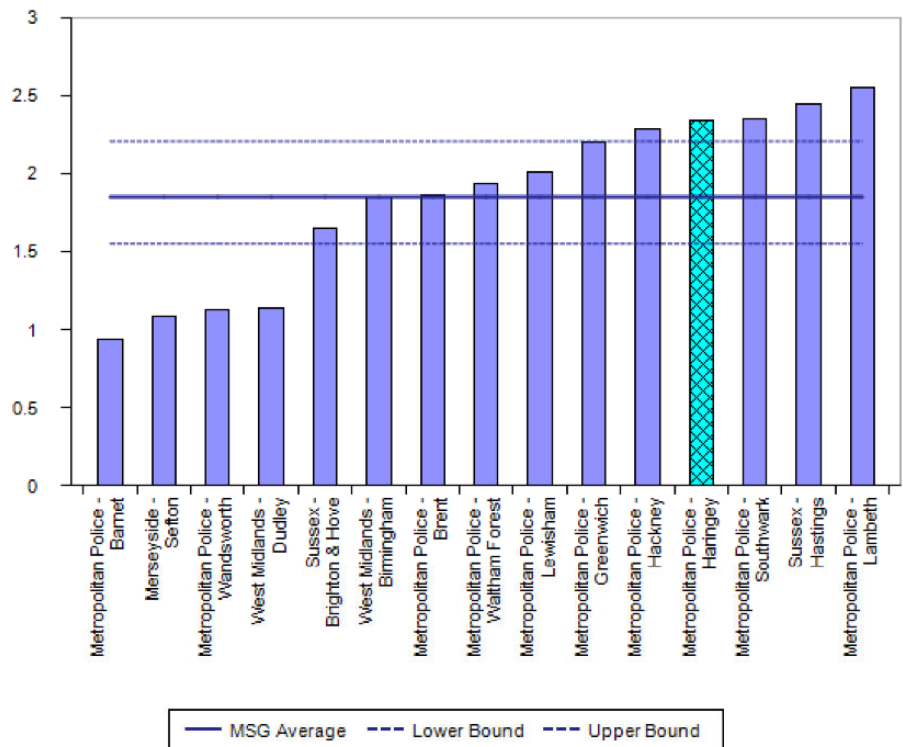
Residential Burglary - target -6%

- Considerable improvement in performance in recent weeks
- Haringey is currently 16th in the MPS a significant improvement from mid 20's two months ago
- Further opportunities for improvement due to high level of offending last year.

Vehicle Crime (Theft of MV and Theft From MV) target - target -8%

- Sustained reduction in the number of Theft of Motor Vehicle offences
- Haringey currently 2nd best in the MPS
- Notable improvement from last year
- Haringey is 14th best in the MPS.

iQuanta Barchart MSG - Crimes per 1000 Residents
 Metropolitan Police - Haringey CSP
 Violence with injury (HMIC)
 01 Aug 2012 - 31 Oct 2012



CSP	Crimes per 1000 Residents
Metropolitan Police - Barnet	0.934
Merseyside - Sefton	1.091
Metropolitan Police - Wandsworth	1.131
West Midlands - Dudley	1.140
Sussex - Brighton & Hove	1.645
West Midlands - Birmingham	1.849
Metropolitan Police - Brent	1.861
Metropolitan Police - Waltham Forest	1.940
Metropolitan Police - Lewisham	2.015
Metropolitan Police - Greenwich	2.204
Metropolitan Police - Hackney	2.286
Metropolitan Police - Haringey	2.336
Metropolitan Police - Southwark	2.352
Sussex - Hastings	2.451
Metropolitan Police - Lambeth	2.552
Haringey MSG Average	1.852

Source: iQuanta 22/11/2012

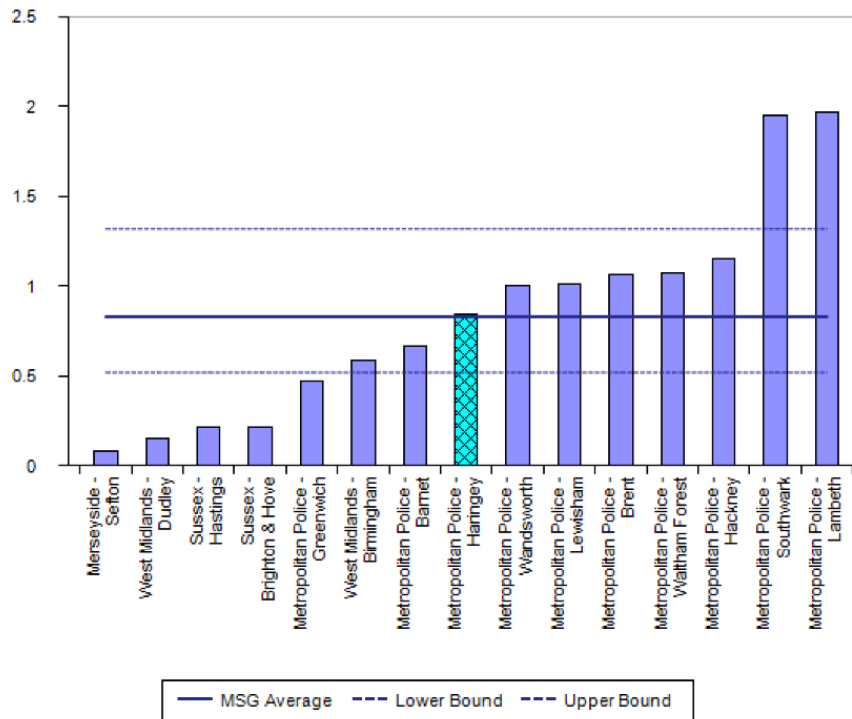
**Comparison with
 Haringey's Most
 Similar Group (MSG)
 Aug-Oct 2012**

**Violence with Injury
 (VWI)**

Haringey is ranked 4th highest in our Most Similar Group (MSG) with a rate of 2.3 VWI offences per thousand residents

This is notably above the MSG average rate of 1.9 offences per thousand residents

iQuanta Barchart MSG - Crimes per 1000 Residents
 Metropolitan Police - Haringey CSP
 Robbery - Personal
 01 Aug 2012 - 31 Oct 2012



CSP	Crimes per 1000 Residents
Merseyside - Sefton	0.080
West Midlands - Dudley	0.156
Sussex - Hastings	0.211
Sussex - Brighton & Hove	0.216
Metropolitan Police - Greenwich	0.470
West Midlands - Birmingham	0.587
Metropolitan Police - Barnet	0.663
Metropolitan Police - Haringey	0.841
Metropolitan Police - Wandsworth	1.004
Metropolitan Police - Lewisham	1.015
Metropolitan Police - Brent	1.063
Metropolitan Police - Waltham Forest	1.078
Metropolitan Police - Hackney	1.149
Metropolitan Police - Southwark	1.950
Metropolitan Police - Lambeth	1.971
Haringey MSG Average	0.830

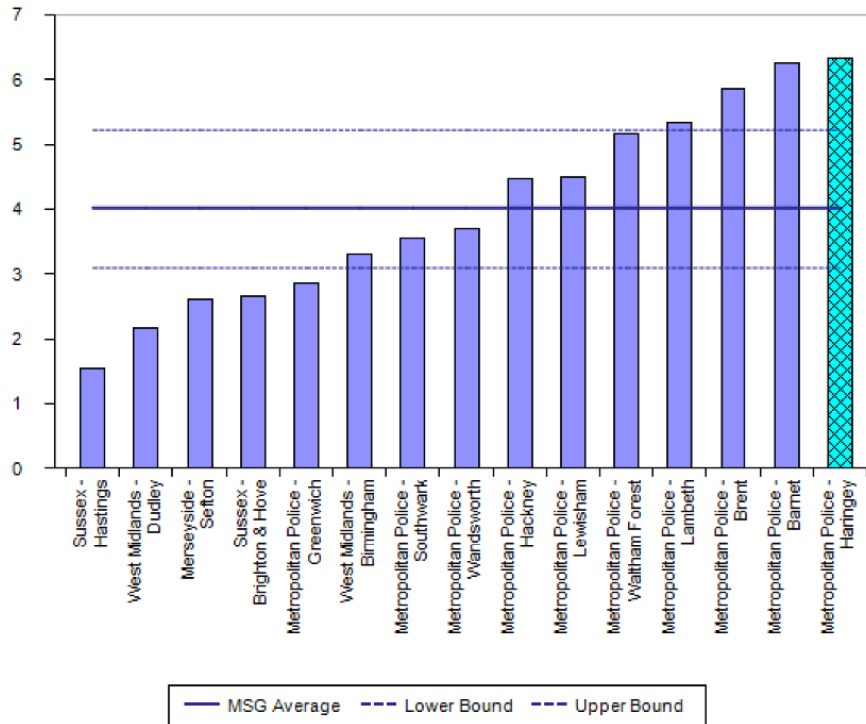
Source: iQuanta 22/11/2012

Comparison with Haringey's Most Similar Group (MSG) Aug-Oct 2012

Personal robbery

Haringey is ranked 8th lowest in our Most Similar Group (MSG) with a rate of 0.84 robberies per thousand residents. This is equivalent to the MSG average rate of 0.83 offences per thousand residents.

iQuanta Barchart MSG - Crimes per 1000 Households
 Metropolitan Police - Haringey CSP
 Domestic burglary
 01 Aug 2012 - 31 Oct 2012



CSP	Crimes per 1000 Households
Sussex - Hastings	1.553
West Midlands - Dudley	2.174
Merseyside - Sefton	2.607
Sussex - Brighton & Hove	2.650
Metropolitan Police - Greenwich	2.852
West Midlands - Birmingham	3.312
Metropolitan Police - Southwark	3.541
Metropolitan Police - Wandsworth	3.707
Metropolitan Police - Hackney	4.469
Metropolitan Police - Lewisham	4.506
Metropolitan Police - Waltham Forest	5.165
Metropolitan Police - Lambeth	5.335
Metropolitan Police - Brent	5.868
Metropolitan Police - Barnet	6.251
Metropolitan Police - Haringey	6.337
Haringey MSG Average	4.022

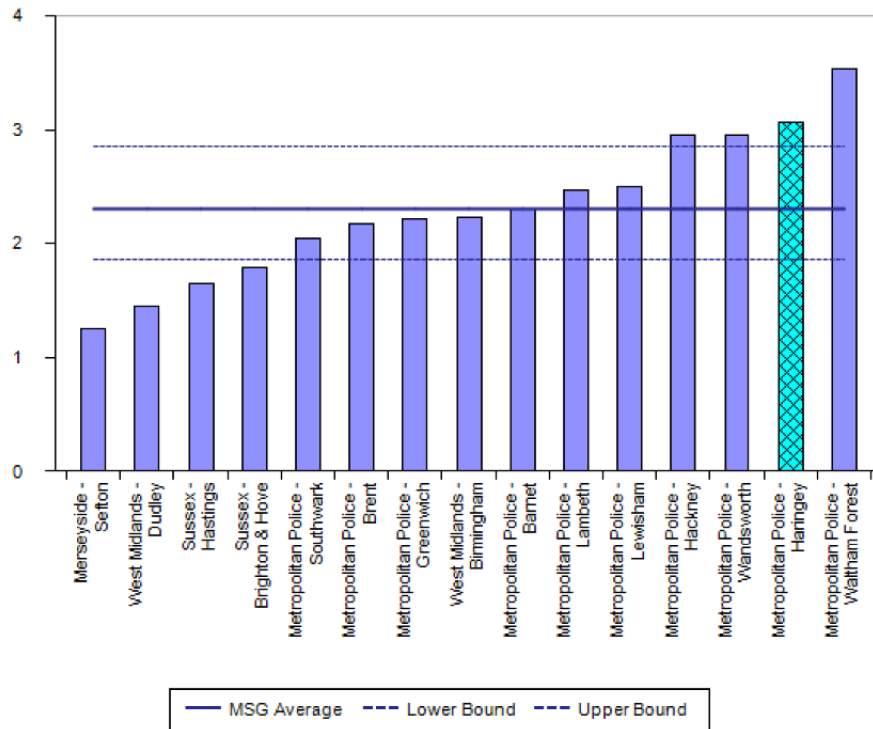
Source: iQuanta 22/11/2012

**Comparison with
 Haringey's Most
 Similar Group (MSG)
 Aug-Oct 2012**

Domestic burglary

Haringey is the highest ranked borough in our Most Similar Group (MSG) with a rate of 6.3 burglaries per thousand households. This is significantly above the MSG average rate of 4.0 offences per thousand households.

iQuanta Barchart MSG - Crimes per 1000 Residents
 Metropolitan Police - Haringey CSP
 Vehicle Crime (excluding Vehicle Interference)
 01 Aug 2012 - 31 Oct 2012



CSP	Crimes per 1000 Residents
Merseyside - Sefton	1.252
West Midlands - Dudley	1.456
Sussex - Hastings	1.641
Sussex - Brighton & Hove	1.792
Metropolitan Police - Southwark	2.047
Metropolitan Police - Brent	2.168
Metropolitan Police - Greenwich	2.219
West Midlands - Birmingham	2.229
Metropolitan Police - Barnet	2.305
Metropolitan Police - Lambeth	2.463
Metropolitan Police - Lewisham	2.502
Metropolitan Police - Hackney	2.945
Metropolitan Police - Wandsworth	2.954
Metropolitan Police - Haringey	3.064
Metropolitan Police - Waltham Forest	3.527
Haringey MSG Average	2.304

Source: iQuanta 22/11/2012

**Comparison with
 Haringey's Most
 Similar Group (MSG)
 Aug-Oct 2012**

**Vehicle crime
 (Theft of and Theft
 from a MV)**

Haringey is ranked 2nd
 highest in our Most
 Similar Group (MSG)
 with a rate of 3.1
 offences per thousand
 residents

This is notably above
 the MSG average rate
 of 2.3 offences per
 thousand residents

ASB related emergency calls

ASB incident type	Sep-Aug11/12	Change	%
200 - Veh - Abandoned Not Stolen	255	-100	-28.2%
201 - Veh Nuisance / Inappropriate Use	420	58	16.0%
202 - Rowdy Or Inconsiderate Behaviour	7,719	-1950	-20.2%
203 - Hoax Call To Emergency Services	57	-684	-92.3%
204 - Rowdy / Nuisance Neighbours	1,300	-275	-17.5%
205 - Littering / Drugs Paraphernalia	41	-41	-50.0%
206 - Animal Problems	244	-153	-38.5%
207 - Trespass	145	-6	-4.0%
208 - Malicious / Nuisance Communications	842	-700	-45.4%
209 - Street Drinking	47	-21	-30.9%
210 - Prostitution Related Activity	91	18	24.7%
211 - Noise	992	-25	-2.5%
212 - Begging / Vagrancy	299	61	25.6%
213 - Fireworks	154	24	18.5%
Total	12,606	-3794	-23.1%

Sep11 – Aug12

- There has been a significant reduction of almost a quarter (23.1%) in the volume of ASB related emergency calls to the police
- Reductions linked to targeted initiatives including closer liaison with betting shops in commercial centres and dedicated response for repeat victims of ASB

Anti-social Behaviour Team (ASBAT)

Since its inception in 2003, ASBAT has favoured early intervention and has had success in the past with applying a far higher number of ABCs than ASBOs with relevant use of dispersal orders and injunctions. The current breakdown of use of powers is below:

- 207 Closure Orders (Class “A” drug related)
- 38 ASBOs (11 more in the pipeline)
- 288 ABCs
- 85 Possession Orders/Evictions
- 1 Premises Closure Orders (ASB related)
- 24 Dispersal Orders
- 253 injunctions and 3 gang-related injunctions

Over the past year, a multi-agency case panel has met with the sole purpose of preventing vulnerable and repeat victimisation. In addition, a new and dynamic partnership tasking group meets monthly to mobilise all frontline resources around hot spot areas